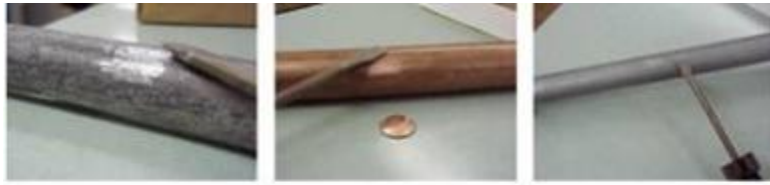


Identifying Lead Pipes In Water Service

News Release Date

04-09-2024



LEAD

COPPER

GALVANIZED

If the scraped area is shiny and silver your service line is lead. A magnet will not stick to a lead pipe.

If the scraped area is copper in color, like a penny, your service line is copper. A magnet will not stick to a copper pipe.

If the scraped area remains a dull gray, and a magnet sticks to the surface, your service line is galvanized steel.

IDENTIFYING LEAD PIPES IN WATER

SERVICEThe Village of Newark is required by the NYS Department of Health to identify all lead services in use within the Village's water system. To comply with NYSDOH the material of each water service line to homes within the Village of Newark will need to be identified. Residents are being asked to do

the following:

1. Locate where your water service enters your home / structure and take picture #1 (see diagram A below)
2. Determine which side of the water meter is your incoming service (see diagram A below)
3. Once identified complete a scratch test to determine material and take picture #2 (see diagram B below)
4. Submit pictures to the Village of Newark via email to kkelley [at] villageofnewark.com or print and send to Village of Newark 100 E Miller Street, Newark, NY 145135. Include address with submitted pictures. [Click this link to watch a You Tube Video on how to identify lead pipes.](#)